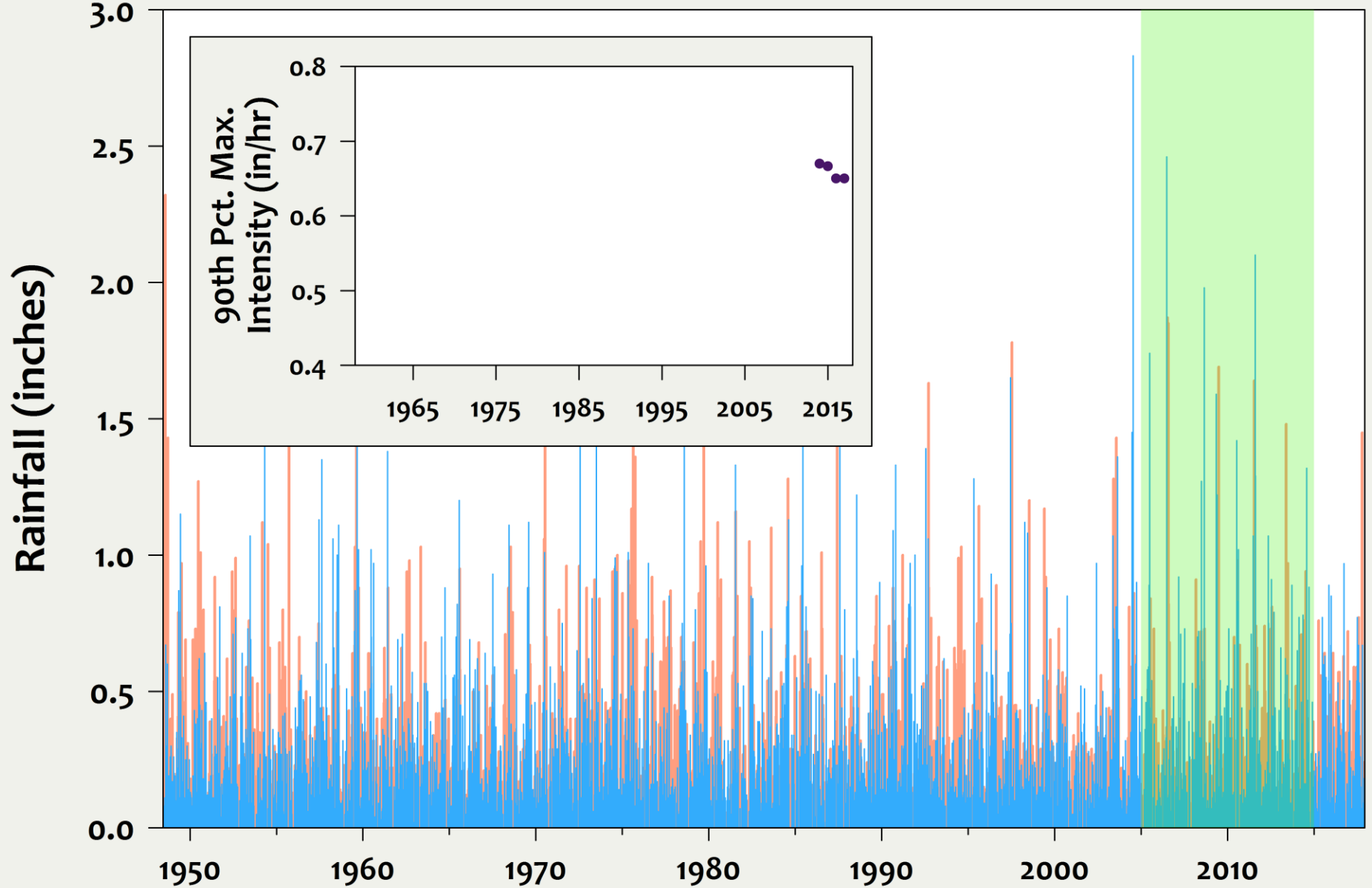


Charlotte / Southeast US Rainfall Intensity: Evidence of Change

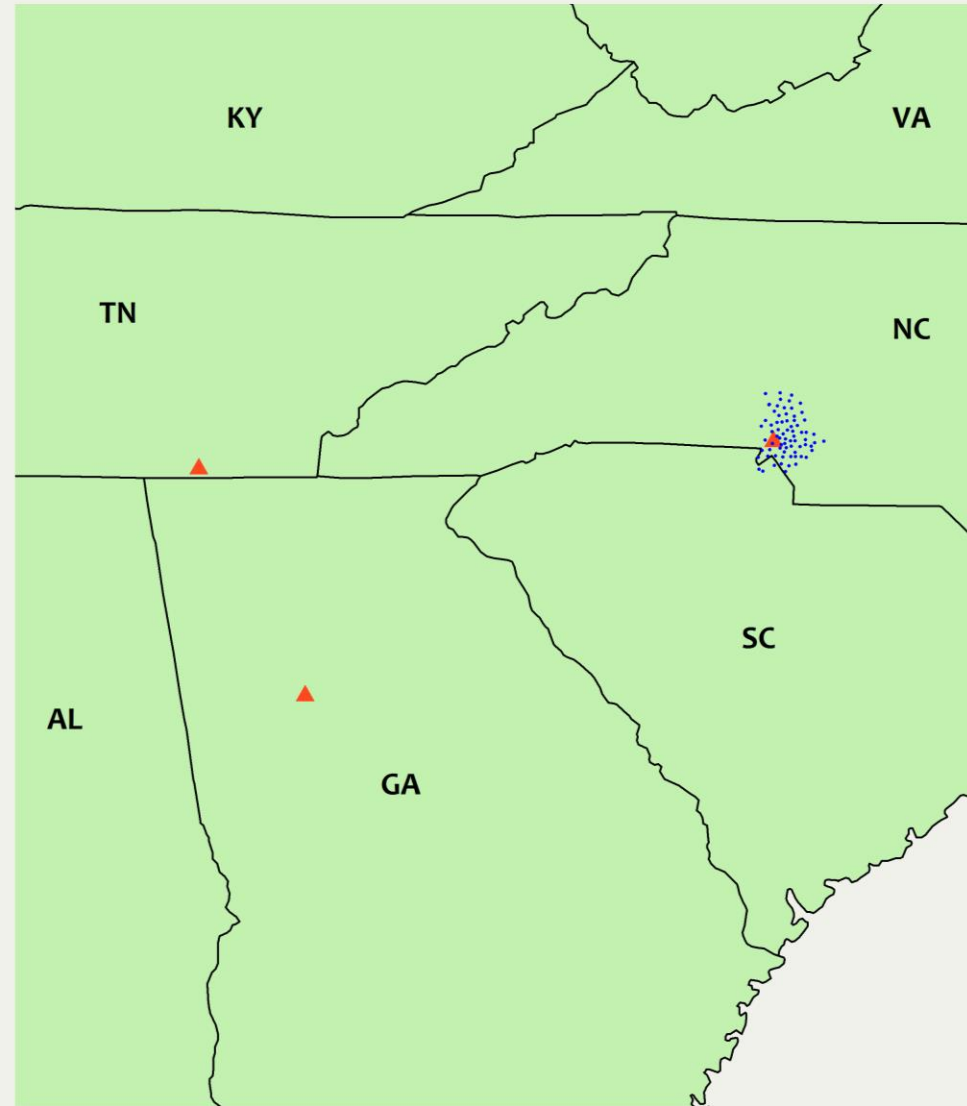
Joel Nipper
Water Quality Modeler
joel.nipper@charlottenc.gov
14 August 2018

Charlotte Airport Event Separation



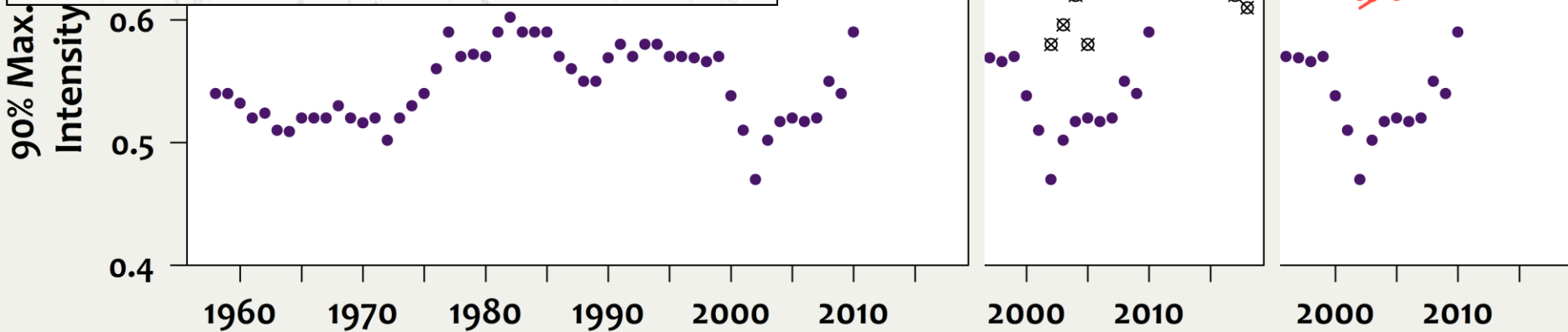
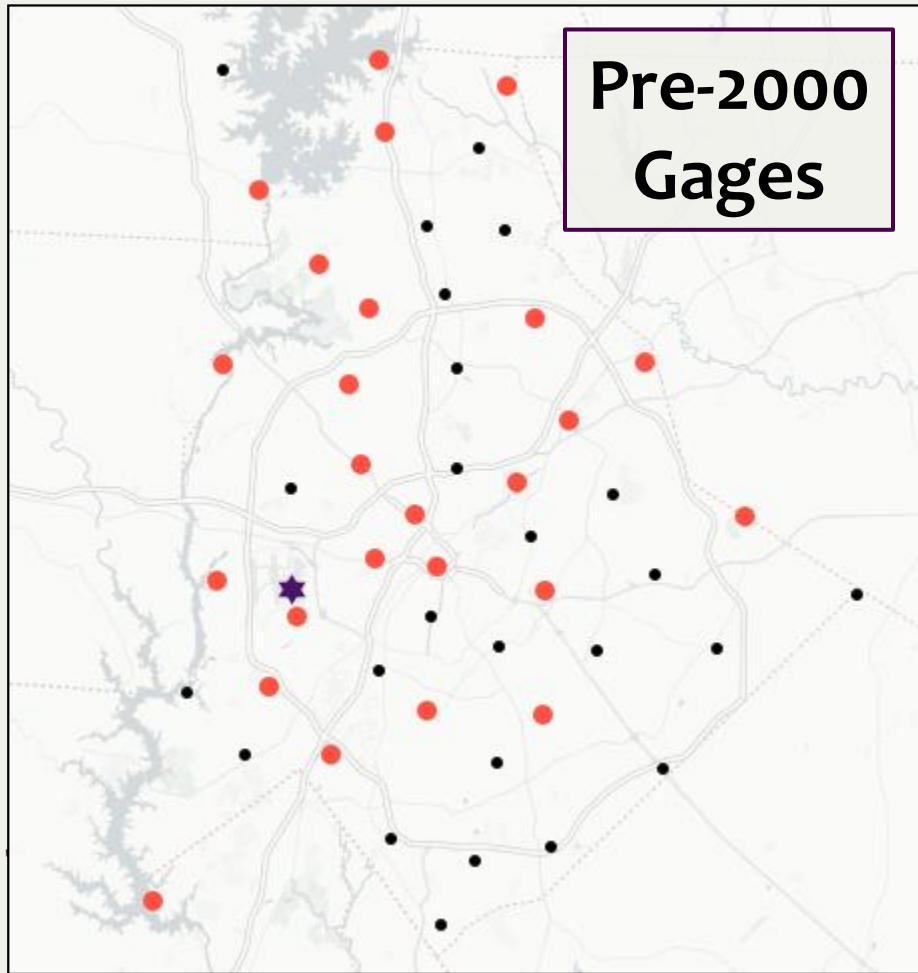
Storm Separation Sites

- ▲ NOAA Long Term Sites
> From 1940s
- Charlotte / USGS Sites
> From 1990s



Charlotte Results

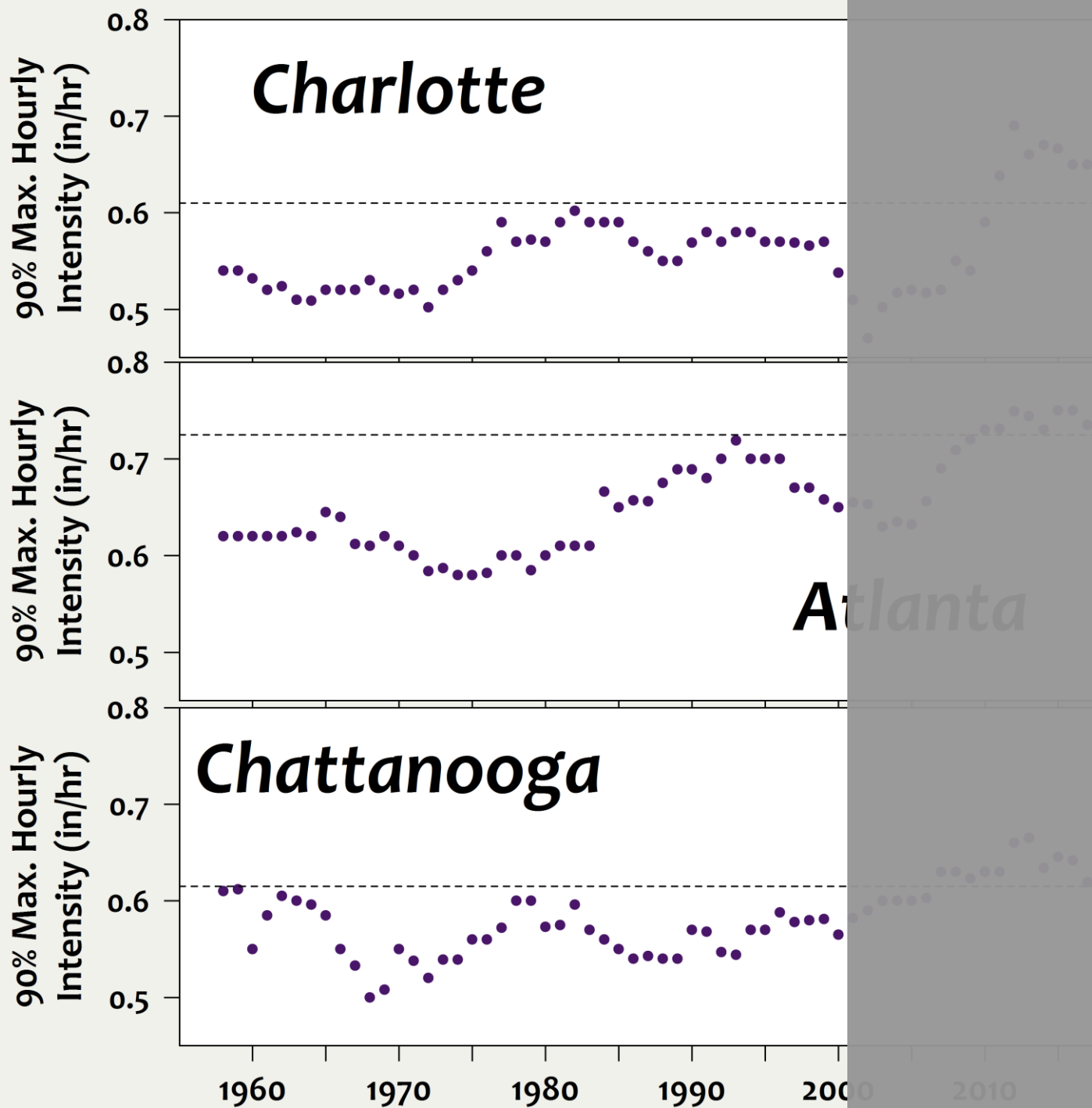
- 25 Upward Trend
- 0 Downward Trend
- 24 No Trend
- ★ CLT Airport



Regional Results

*NOAA Atlas
14 Window*

*USGS /
CharMeck
Window*



Questions?

Acknowledgments

Marc Recktenwald, CMSWS

Data Providers

> NOAA, USGS

Open Source Software

>  