



A MATURING IN-LIEU-FEE PROGRAM'S ROLE IN DESIGN AND CONSTRUCTION OF RESTORATION PROJECTS



KENTUCKY'S EFFORT TO NAVIGATE THE EVER-EVOLVING
RELATIONSHIPS AND RESPONSIBILITIES OF ITS
STAKEHOLDERS

JOSH MORGAN, P.E. – PROJECT MANAGER
JESSIE BOLES, E.I.T. – PROJECT MANAGER

AUGUST 2018

SUCCESS ACCOUNTABILITY QUESTIONS

- HOW DO WE MANAGE RESPONSIBILITY THROUGHOUT DESIGN AND CONSTRUCTION?
- WHO DEFINES SUCCESS THROUGH THE VARIOUS STAGES OF THE PROJECT?
- HOW IS ACCOUNTABILITY TRANSFERRED THROUGHOUT THE PROJECT?
- WHO IS ACCOUNTABLE WHEN THE PROJECT IS NOT SUCCESSFUL ?



FILO PROJECT STAKEHOLDERS

FILO

– KY'S WETLAND AND STREAM IN-LIEU-FEE MITIGATION PROGRAM (KY DEPT OF FISH AND WILDLIFE)

REGULATOR

– USACE, KDOW, USFWS, USEPA

LANDOWNER

– PRIVATE LANDOWNERS OR PUBLIC LAND MANAGERS

DECA

– KY'S FINANCE CABINET DIVISION OF ENGINEERING AND CONTRACT ADMINISTRATION

REAL
PROPERTIES

– KY'S FINANCE CABINET DIVISION RESPONSIBLE FOR LAND AND EASEMENT ACQUISITIONS

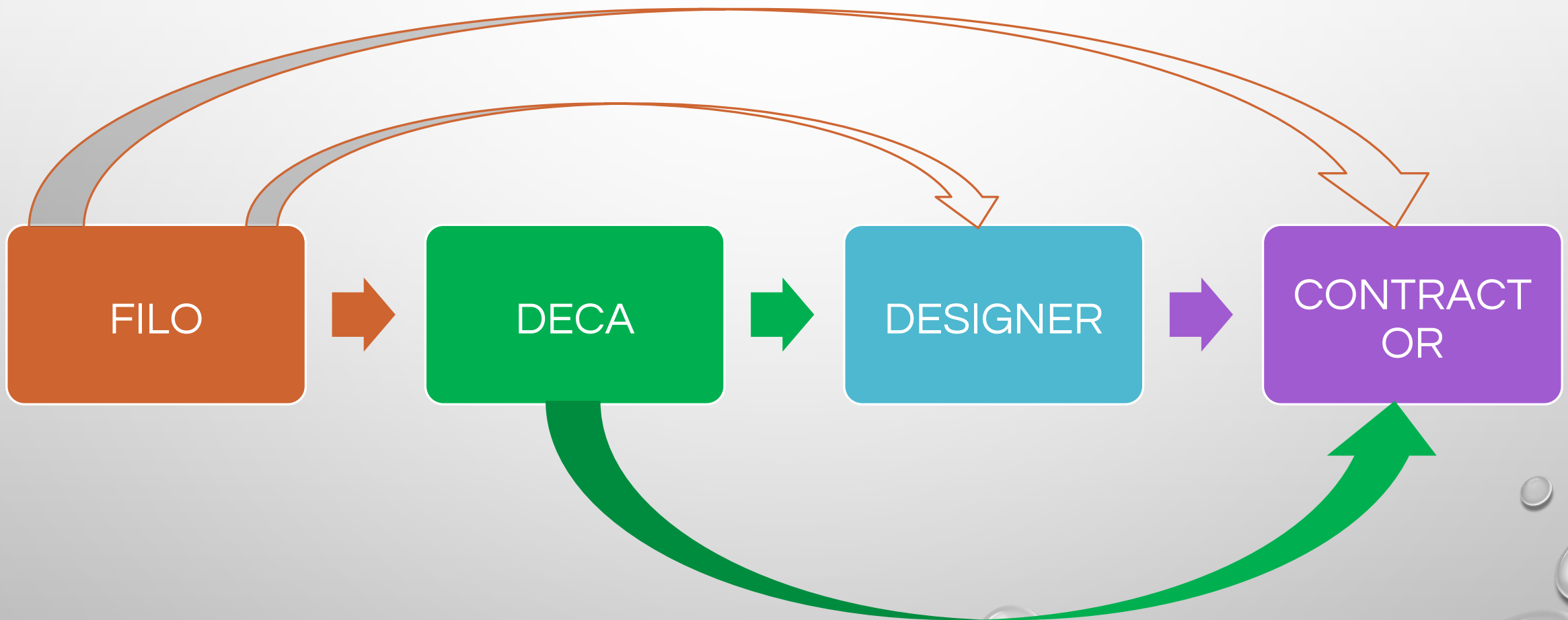
DESIGNER

– PRIVATE-SECTOR ENGINEERING CONSULTANT

CONTRACTOR

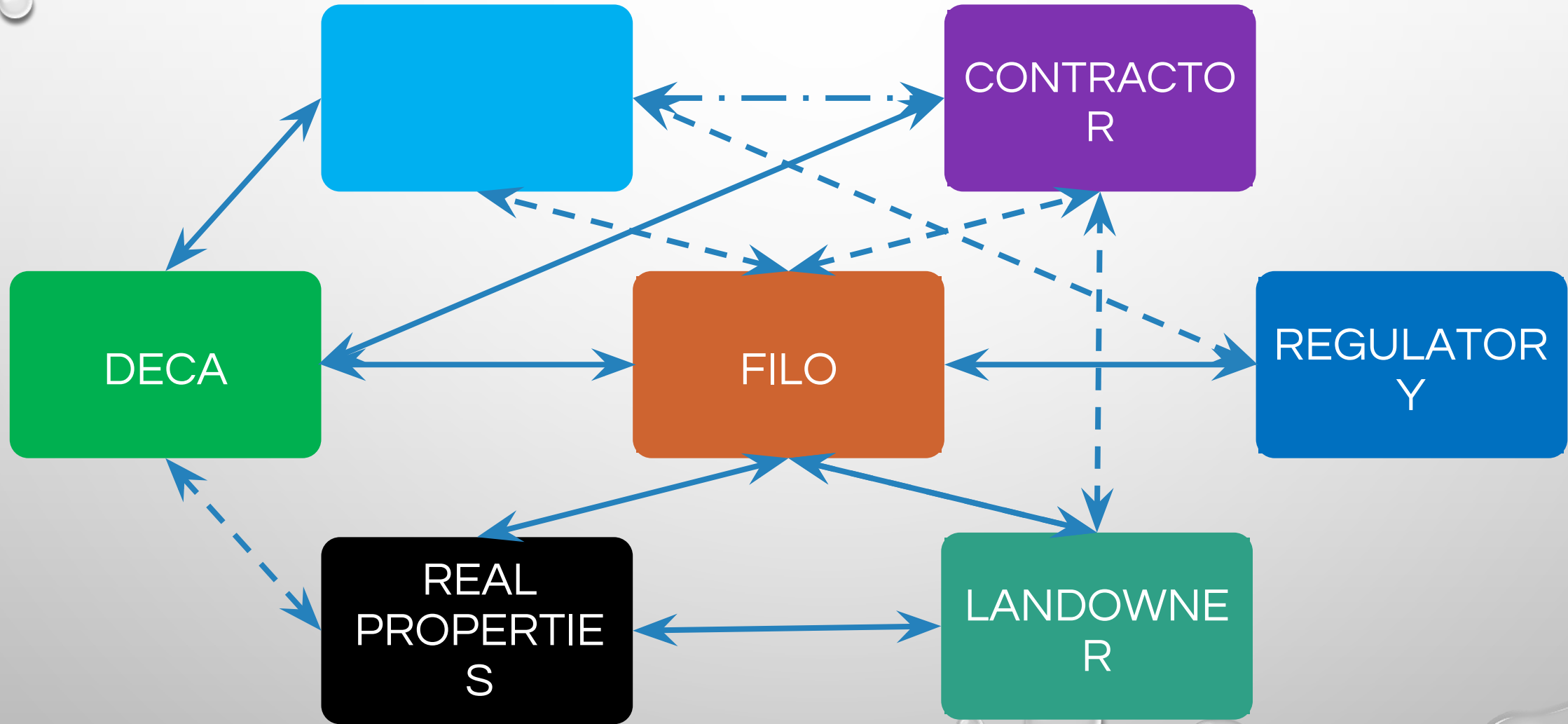
– PRIVATE-SECTOR CONSTRUCTION ENTITY

CONTRACTING RELATIONSHIPS – STANDARD PROJECTS



DEFINED BY KY
STATUTE

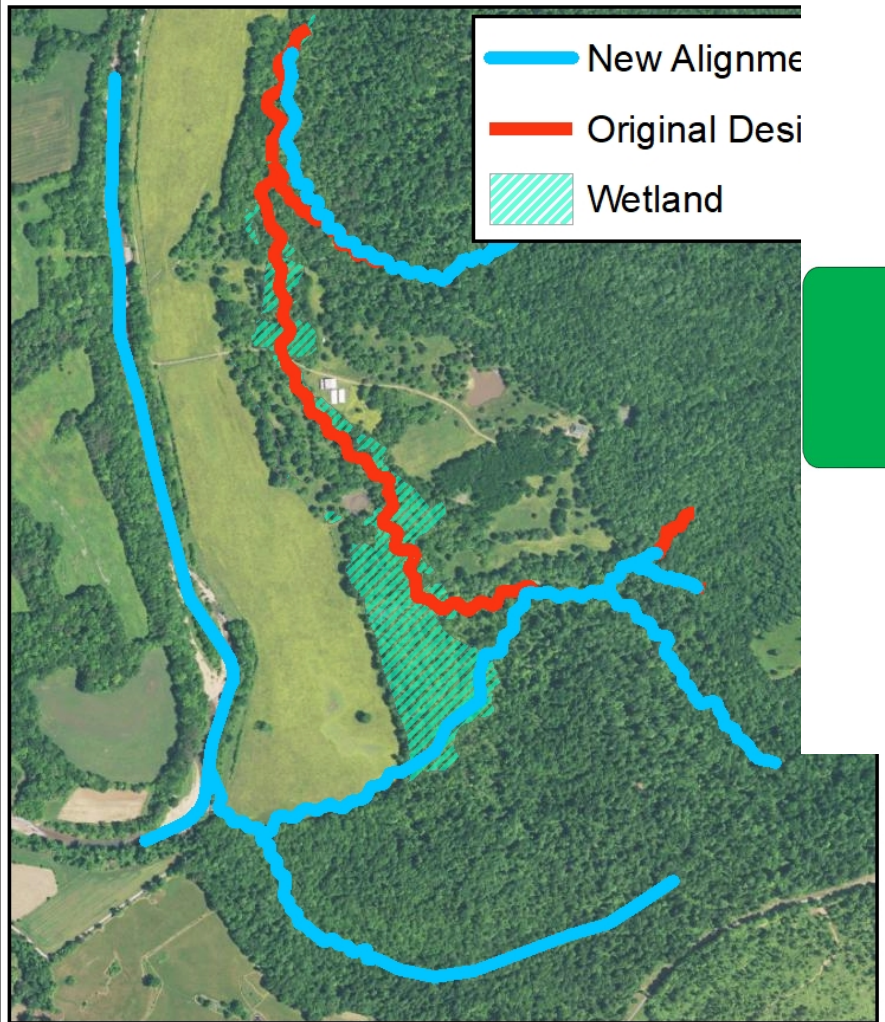
CONTRACTING RELATIONSHIPS – FILO PROJECTS



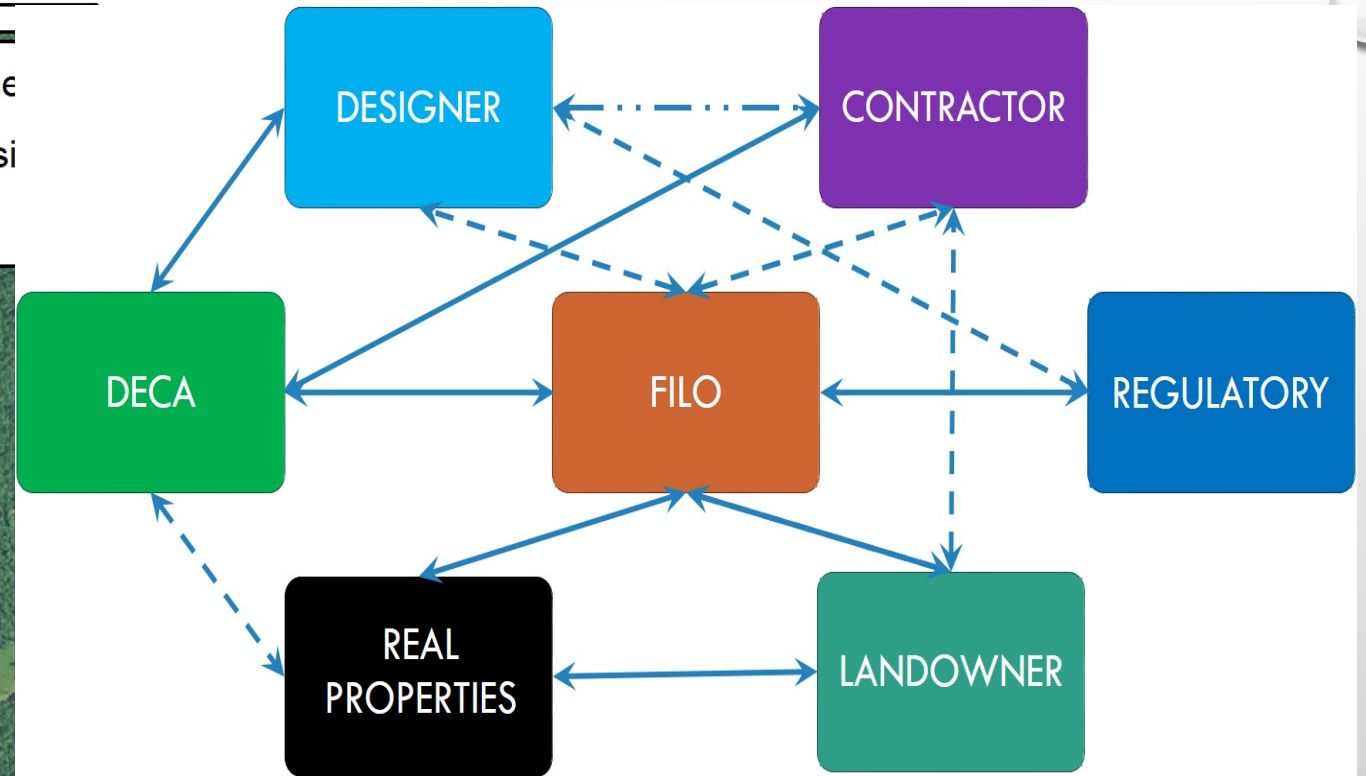
STANDARD PROJECT EXAMPLE



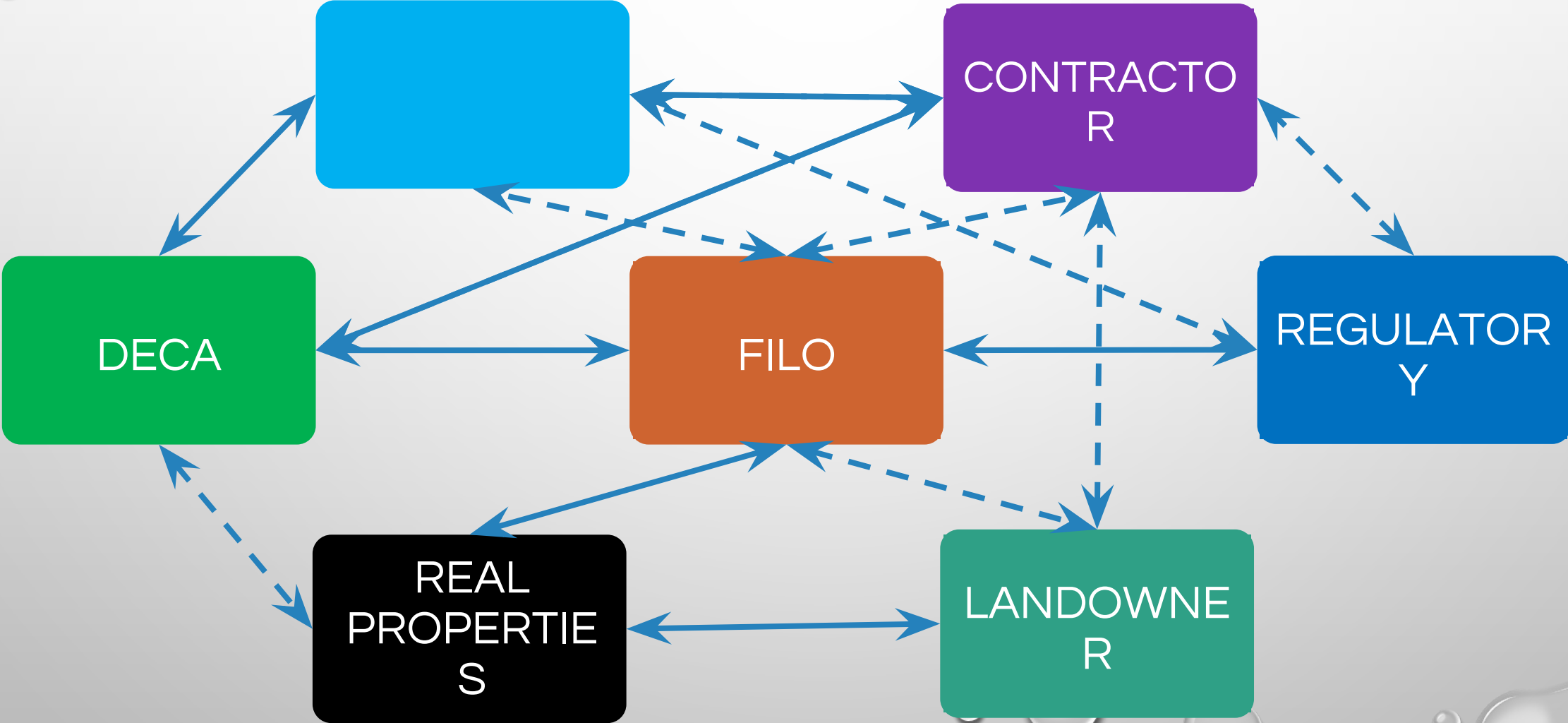
STANDARD PROJECT EXAMPLE



Prepared by: **Significant Alignment Changes**
Project Overview (Aerial) **KDFWR Stream Restoration Project**
0 300 600 900 1,200 Feet



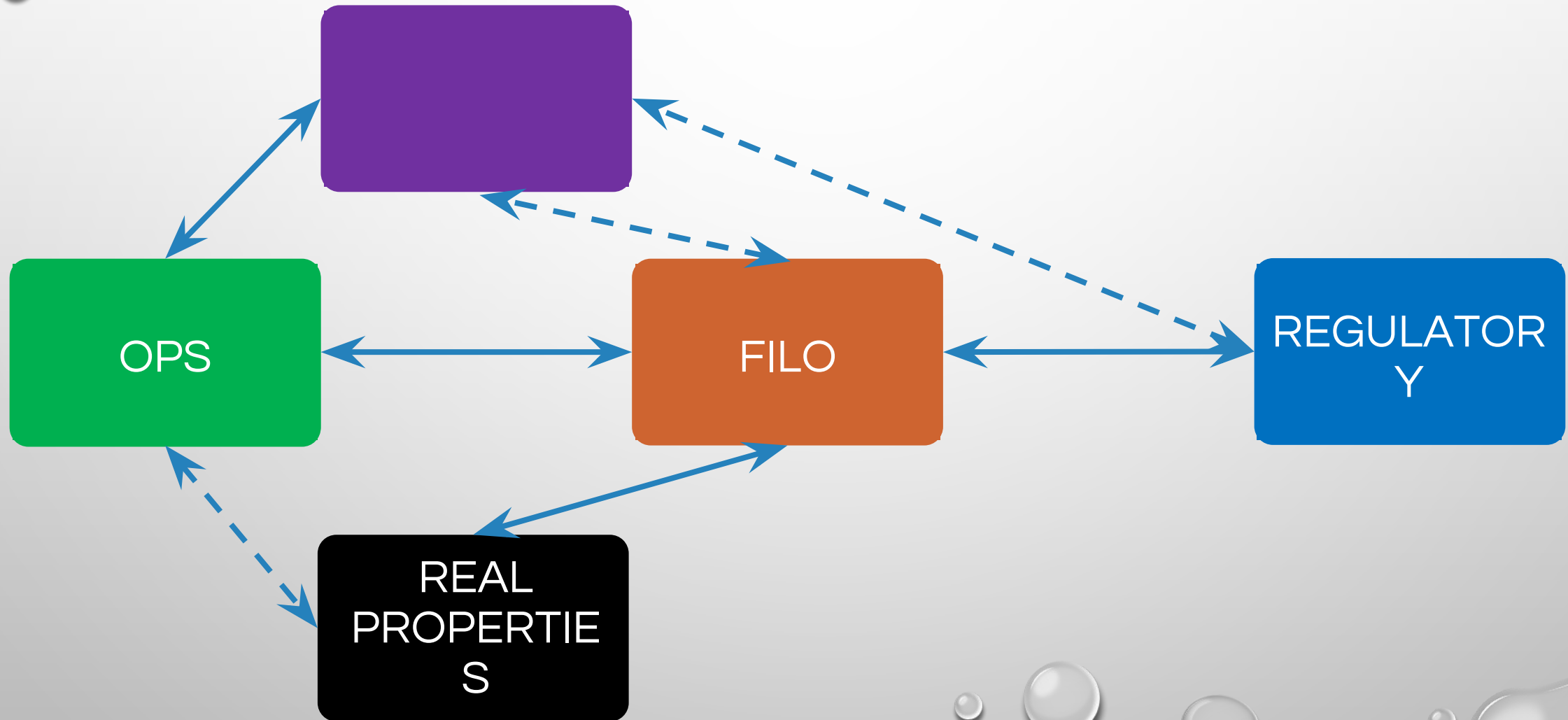
CONTRACTING RELATIONSHIPS – DESIGN/BUILD PROJECTS



DESIGN BUILD EXAMPLE



CONTRACTING RELATIONSHIPS – FULL DELIVERY PROJECTS



WHO IS ACCOUNTABLE WHEN THE PROJECT IS *NOT* SUCCESSFUL?



- FILO
- DECA
- DESIGNER
- CONTRACTOR



The image features a light gray gradient background with several realistic water droplets of various sizes scattered in the corners. The droplets have highlights and shadows, giving them a three-dimensional appearance. The word "QUESTIONS?" is centered in the middle of the page in a bold, black, sans-serif font.

QUESTIONS?