

# An Introduction to the Identification and Ecology of EPT families

## Wrap-Up

---

---

---

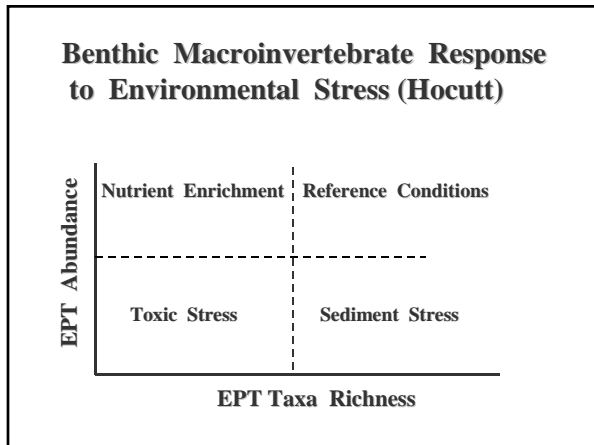
---

---

---

---

---



---

---

---

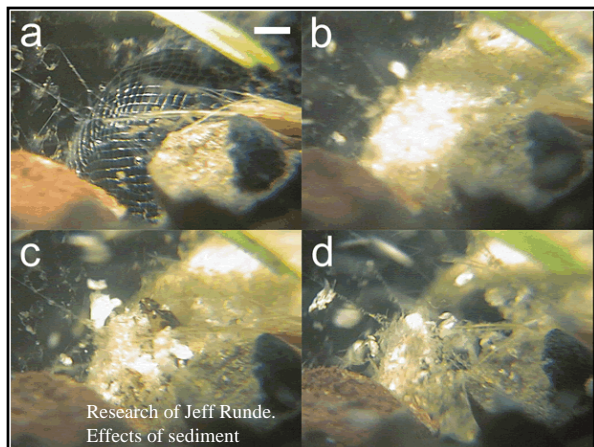
---

---

---

---

---



---

---

---

---

---

---

---

---




---

---

---

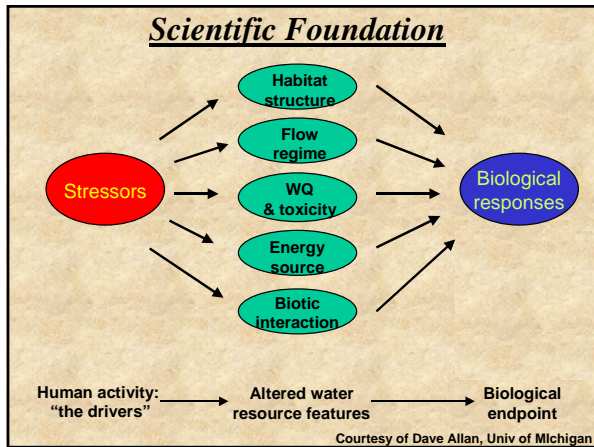
---

---

---

---

---




---

---

---

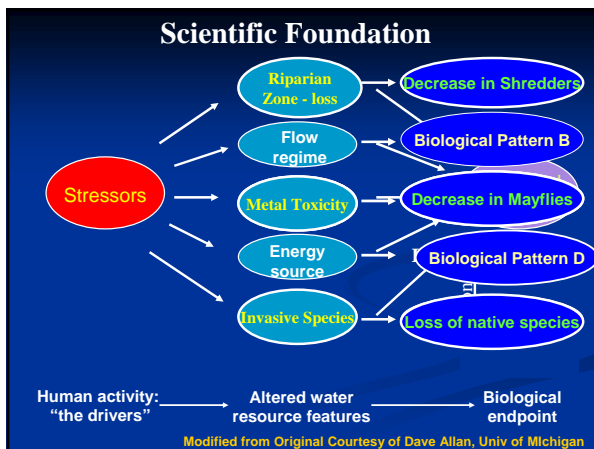
---

---

---

---

---




---

---

---

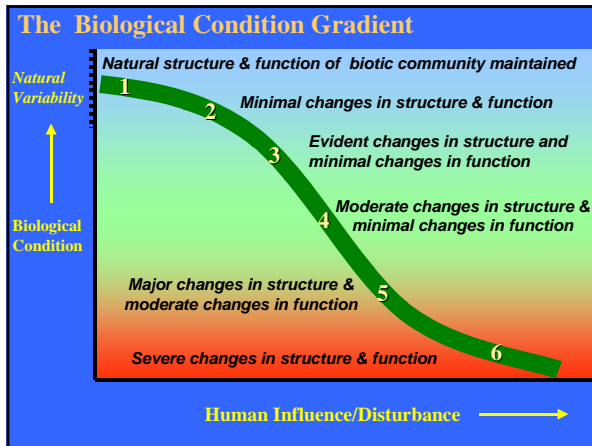
---

---

---

---

---




---

---

---

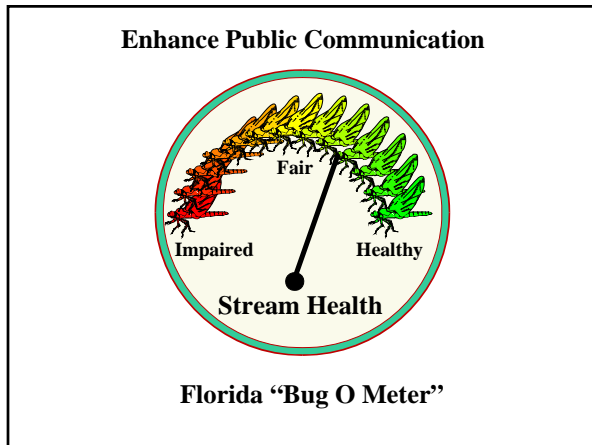
---

---

---

---

---




---

---

---

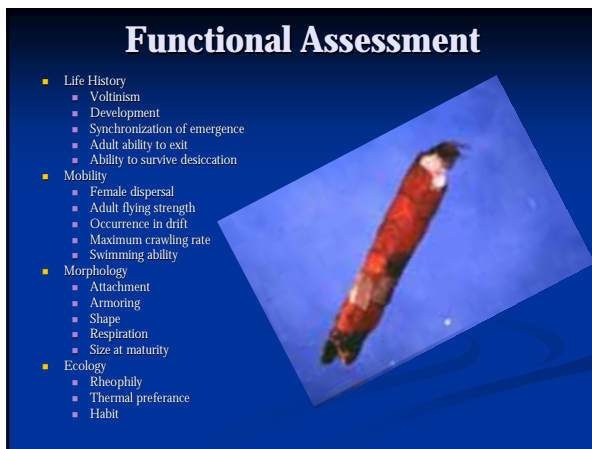
---

---

---

---

---




---

---

---

---

---

---

---

---

### It's not rocket science

- Once you become familiar with the fauna dichotomous keys are frequently not necessary for identification to this level.
- Learn the morphology (gill structure and location), general appearance, habitat, or case construction for caddis will work (L/P calls).
- Many taxa (tolerant and intolerant) can be identified to genus and/or species with little more effort.

---

---

---

---

---

---

---

---

### Stream Evaluation

- Catchment perturbations (toxic, sediment or enrichment issues) can be identified when compared to reference reaches.
- More accurate mitigation site descriptions, potential for improvement.
- Degraded conditions can often and easily be detected at this level of identification.
- These data are more efficiently compared to the data collected by regulatory agencies.

---

---

---

---

---

---

---

---



---

---

---

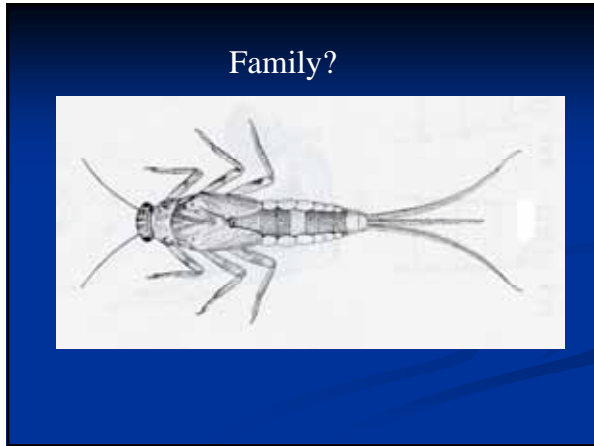
---

---

---

---

---



---

---

---

---

---

---

---

---



---

---

---

---

---

---

---

---



---

---

---

---

---

---

---

---



---

---

---

---

---

---

---

---



---

---

---

---

---

---

---

---



---

---

---

---

---

---

---

---



---

---

---

---

---

---

---

---



---

---

---

---

---

---

---

---