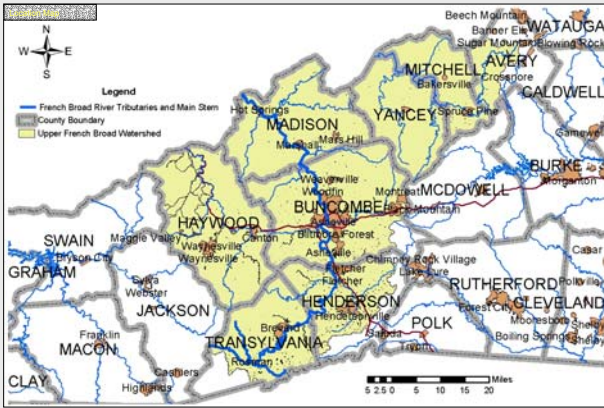
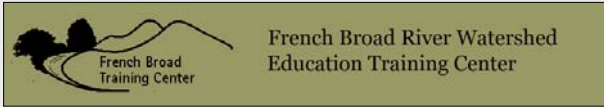


The French Broad River Watershed Education Training Center



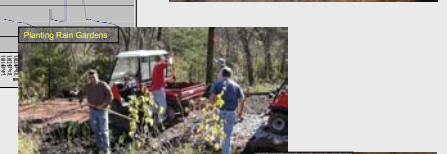
Education

Specific outputs included many tours and workshops that reached a cross section of the population whose participants included the public, landowners, policy planners, natural resource and design professionals, homeowners and students from colleges, universities, high schools and middle schools. Results included changing participants' attitudes and perceptions that planning and implementation of BMP's could be attractive and effective in preserving or improving water quality.

The following deliverables were included:
 Twelve workshops at the training center or landowner site for professional natural resources managers, landowners, and public officials.

Five workshops for local public officials to assist in implementing effective watershed management strategies.

Educational and program support for the watershed projects including the: Upper French Broad River Riparian Restoration and Protection Project, Mountain Nurseries-Keeping the French Broad Clean, King Creek Restoration, Bent Creek Stormwater Best Management Practices and Stream Restoration, Asheville Stormwater, Asheville LID, Morril Meadows Conservation Easement, Cane Creek Restoration and Stabilization.



The French Broad River Watershed Education Training Center

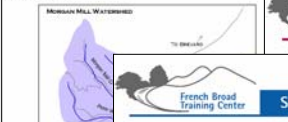
Water quality is generally high in the French Broad River Basin, supporting state designations for trout waters, outstanding resource waters and high quality waters. During the development of the French Broad River Basinwide Management Plan, however, several water quality issues were identified and targeted for improvement. These issues included sedimentation, nutrients, toxic substances and oxygen-consuming wastes. Each one is related to nonpoint source pollution. The French Broad training center offers educational programs that address nonpoint source pollution and is emerging as a regional leader for effectively dealing with such water quality concerns.

Established in spring of 2001 as a partnership between North Carolina State University and The North Carolina Arboretum, the center is home to North Carolina State University scientists and field faculty who target water quality and quantity issues in Western North Carolina. In coordination with North Carolina State University's Soil and Water Environmental Technology Center, the French Broad River Training Center provides comprehensive nonpoint source educational programming to landowners, concerned citizens, natural resource managers and public officials. Educational programs offered through the center include environmental planning, conservation easements, agricultural and urban stormwater runoff management and erosion control.

The center is located at the North Carolina Arboretum in Asheville, NC. The Arboretum is a 426-acre public garden located within the Bent Creek Research and Demonstration Forest of the Pisgah National Forest. It is a place for education, research, conservation and garden demonstration. The Arboretum offers a wide range of activities for visitors of all ages and integrates both education and research as it elevates the aesthetic, cultural and economic quality of life in Western North Carolina. For additional information on this North Carolina treasure, visit www.ncsu.edu/waterquality/

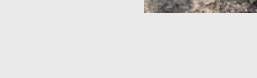
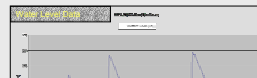
Watershed Notes: A Fact Sheet for Landowners in the Morgan Mill Creek Watershed

Where is the Morgan Mill Creek watershed?
 The Morgan Mill Creek watershed is a three square mile area of northern Haywood and Graham counties. It is a tributary of the French Broad River. The watershed is located in the upper French Broad River Basin. The watershed is bounded by the French Broad River to the east and south, and by the French Broad River and the French Broad River to the west and north.



Conservation Easements

Conservation easements are legal agreements between a landowner and a conservation organization. They are used to protect natural resources, such as forests, wetlands, and streams. The French Broad River Training Center offers assistance in developing and implementing conservation easements. The center can help landowners understand the benefits of conservation easements, identify potential easement areas, and assist in the legal process of establishing an easement. The center can also provide ongoing support and monitoring for the easement.



Fact sheets

Several fact sheets were distributed to local county extension centers and direct mailed to landowners on the French Broad and some of its tributaries. These are available on line at ncsu.edu/waterquality/frenchbroad.